



Germany



Heike Claus, Ulrich Vogel, Wiebke Hellenbrand



General information, Germany



Population size	Category	
Structure of surveillance of meningococcal disease	Statutory notification of disease	Yes
	Enhanced surveillance	No
	Centralized Laboratory Surveillance	Yes
NRL: repertoire of typing targets	Serogroup	Yes
	PorA antigen sequence typing	Yes
	FetA antigen sequence typing	Yes
	Vaccine Antigen sequence typing (e.g. fhbp)	occasionally
	Antibiotic resistance gene typing	occasionally
	MLST (7 loci)	Yes
Genome sequencing	occasionally	
Meningococcal vaccine recommendation	Polysaccharide vaccines (not conjugated)	No
	MenC conjugate	YES
	MenACWY conjugate	Risk group
	Protein vaccines targeting MenB	Risk group
Uptake of MenWY vaccines	estimated % per target group size	No data



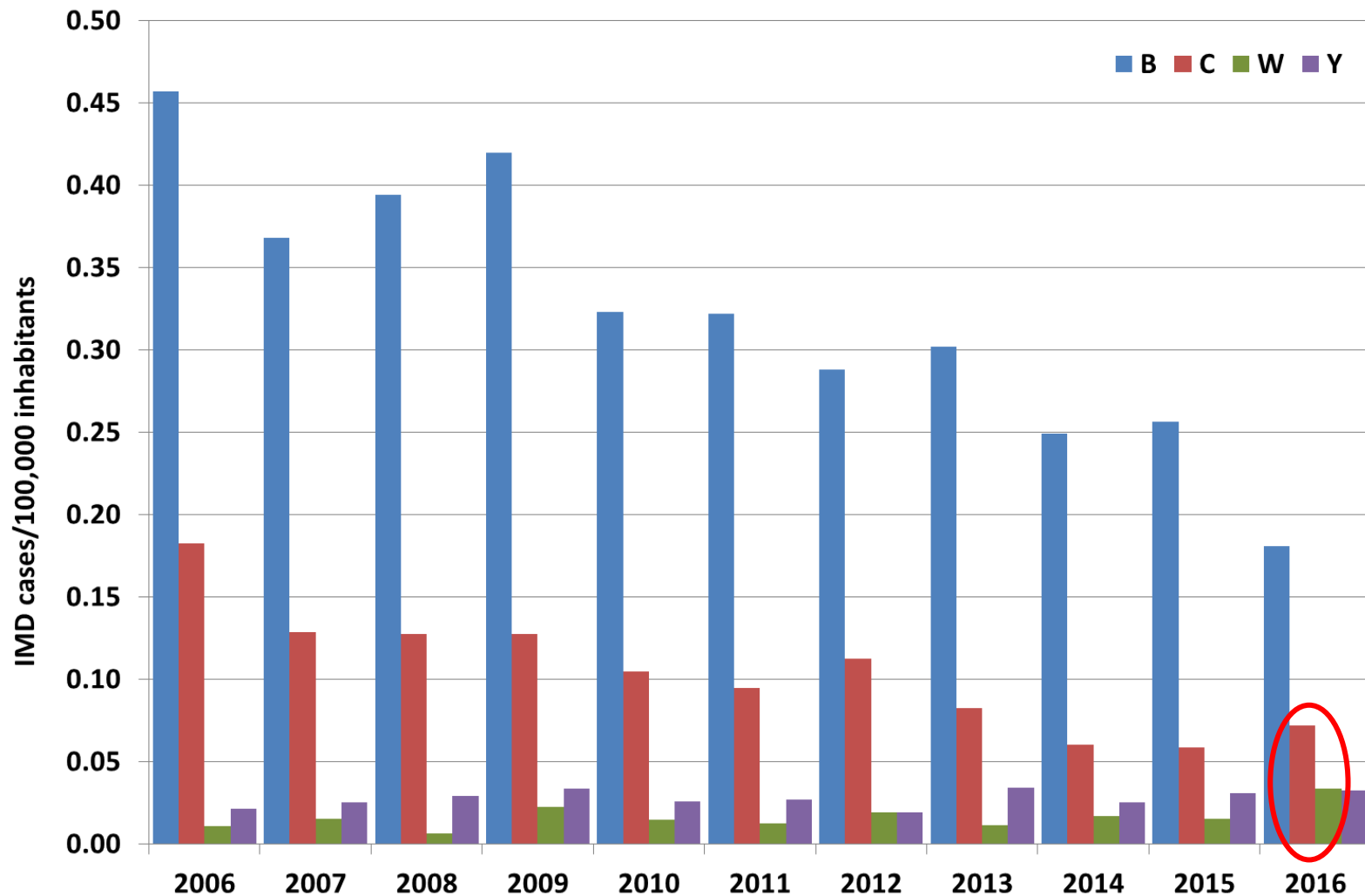
Basic numbers for 2015

Reported cases of invasive meningococcal disease * (annual incidence)	N=293 (0.36 /100,000)
Proportion of reported cases of invasive meningococcal disease with strains or samples processed at NRL <i>(=laboratory surveillance coverage of reported cases)</i>	82,6 %
MenW <ul style="list-style-type: none"> • N • Annual incidence • % of all cases 	<ul style="list-style-type: none"> • N=11 (2016: N=22) • 0.014/100,000 • 3.7 % (2016: 10.5%)
MenY <ul style="list-style-type: none"> • N • Annual incidence • % of all cases 	<ul style="list-style-type: none"> • N=22 (2016: N=21) • 0.027/100,000 • 7.5% (2016: 10.0%)

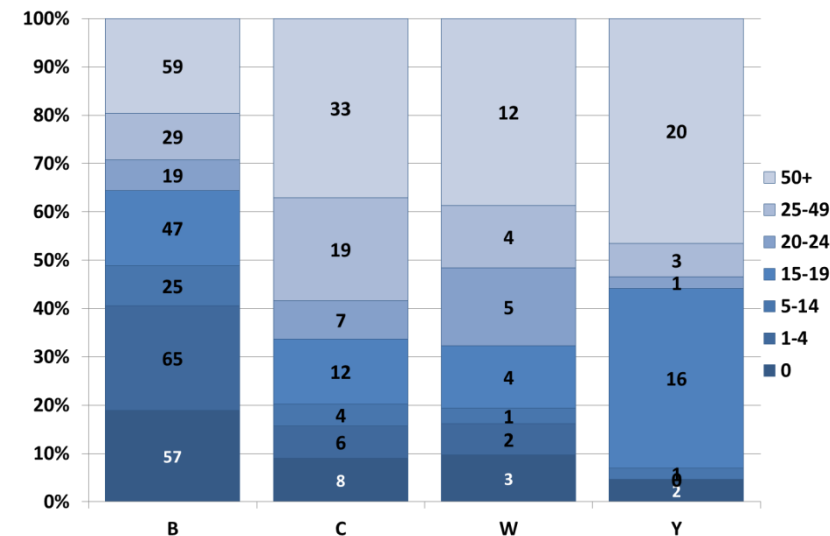
* please use [ECDC case definition](#)



Annual IMD incidence by serogroup, Germany, 2006-2016



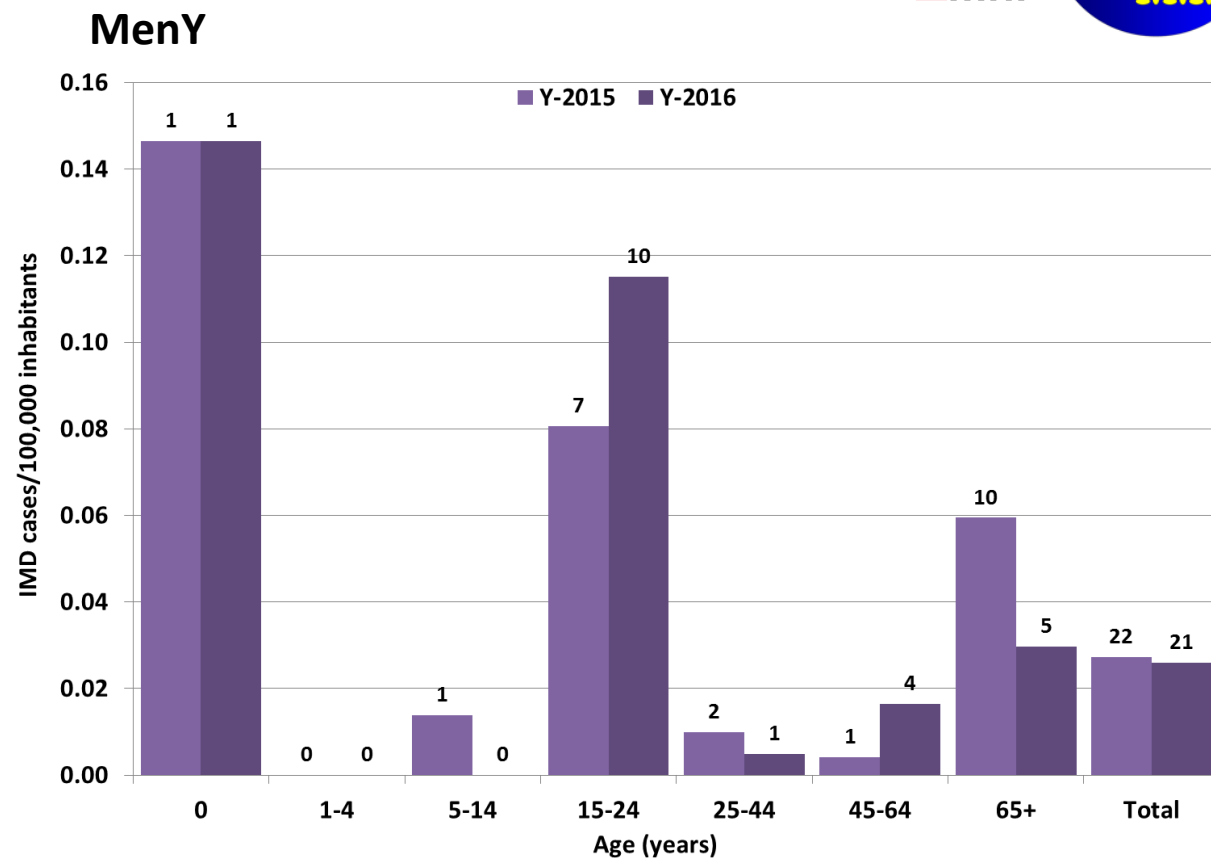
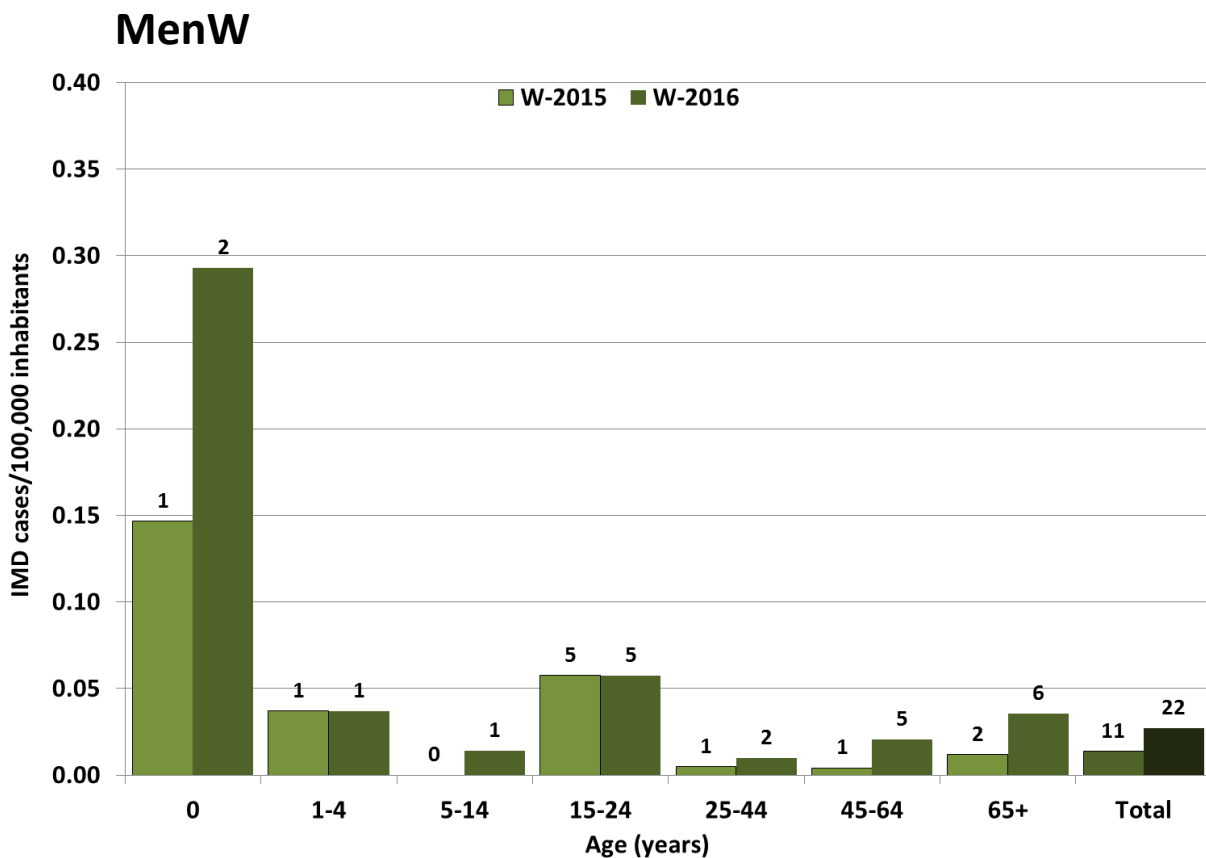
Age distribution by serogroup, 2015-2016



Data as of Oct. 19, 2016

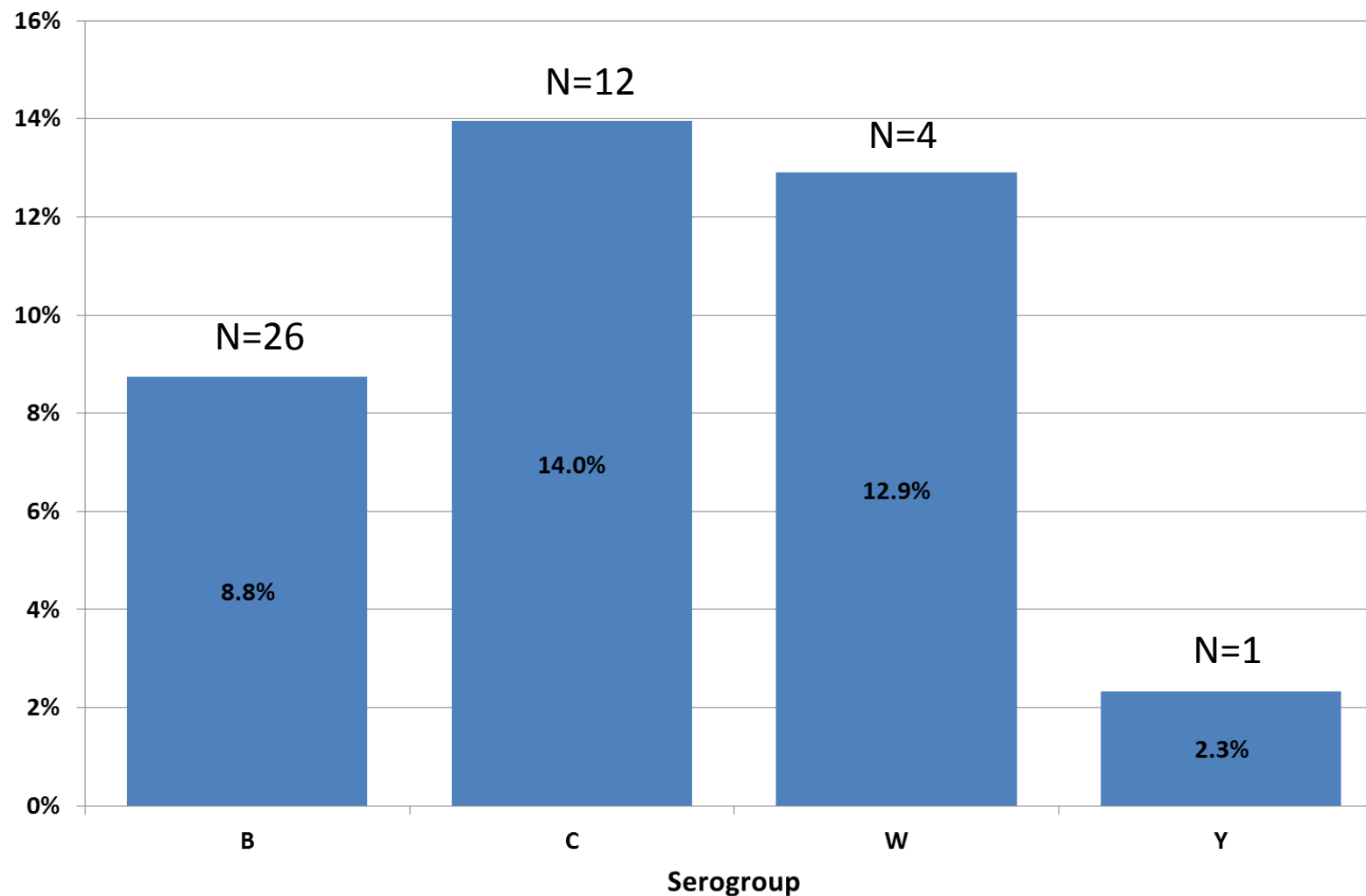


Age specific MenW and MenY incidence, Germany, 2015 and 2016 (as of 19.10.2016)





Case fatality of IMD cases by serogroup, Germany, 2015-2016





Sequence typing of **MenW** in 2015 and / or 2016

Year	2015	2016
Dominant variant according to the typing method used	W:P1.5,2:F1-1 (19-76 years)	W:P1.5,2:F1-1 (11-67 years)
Dominant variant according to the typing method used, in % of all MenW cases	40% (4/10)	41% (9/22)
cc11 in % of all serogroup W cases	50%	48%



Outbreaks caused by serogroups W and Y 2012 - 2016

	MenW	MenY
No. of outbreaks or clusters	3 spatio-temporal clusters, all W:P1.18-1,3:F4-1	4 spatio-temporal clusters, all Y:P1.5-2,10-1:F4-1
Total number of patients involved	6	8
Settings	No epidemiological links	No epidemiological links