



# FRANCE

Eva Hong – Institut Pasteur

# General information



Population size	Total	66 627 602
Structure of surveillance of meningococcal disease	Statutory notification of disease	Yes
	Enhanced surveillance	Yes
	Centralized Laboratory Surveillance	Yes
NRL: repertoire of typing targets	Serogroup	Yes
	PorA antigen sequence typing	Yes
	FetA antigen sequence typing	Yes
	Vaccine Antigen sequence typing (e.g. fhbp)	Yes
	Antibiotic resistance gene typing	Yes
	MLST (7 loci)	Yes
	Genome sequencing	Yes
Meningococcal vaccine recommendation	Polysaccharide vaccines (not conjugated)	No
	MenC conjugate	Yes
	MenACWY conjugate	Risk group
	Protein vaccines targeting MenB	Risk group
Uptake of MenWY vaccines	estimated % per target group size	Not applicable

Nov. 1st, 2016

EMGM Meeting on MenWY, Frankfurt

2

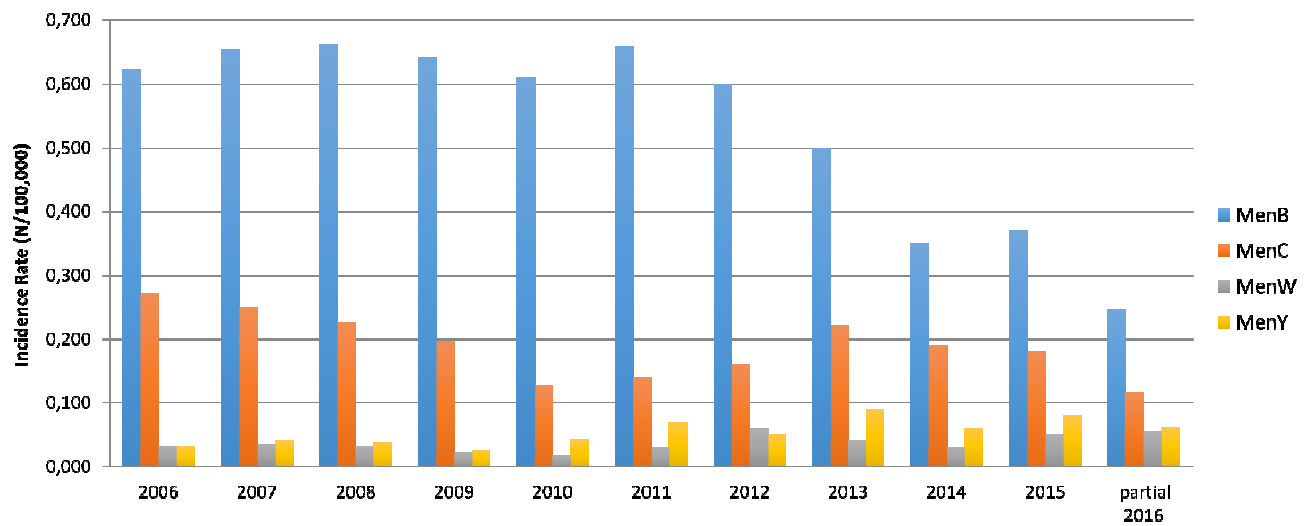
# Basic numbers for 2015



No of reported cases of <b>invasive meningococcal disease</b> (incidence rate)	N= 469 0.79 /100,000
Proportion of reported cases of invasive meningococcal disease, whose strains or samples were processed at NRL (= <i>laboratory surveillance coverage of reported cases</i> )	97 % (453)
MenW •no of cases, •incidence rate, •% of all cases	N= 32 0.05/100,000 6.8 %
MenY •no of cases, •incidence rate, •% of all cases	N= 54 0.08/100,000 11.5 %

Source: Annual report 2015\_InVS

# Incidence rates for serogroups B, C, W, Y from 2006-2016(partial)

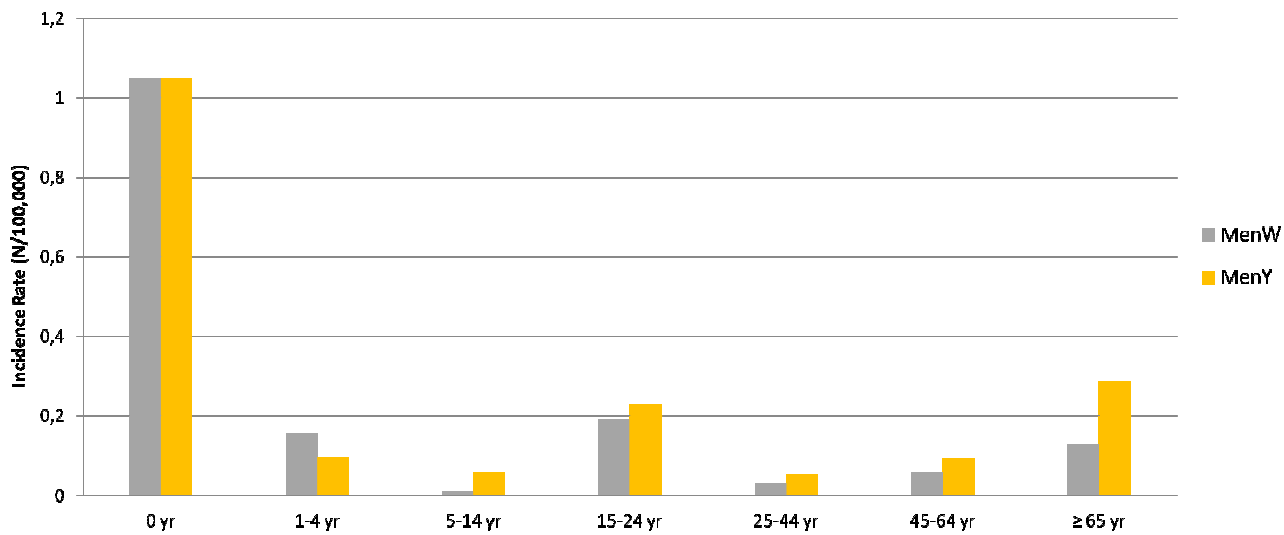


Nov. 1st, 2016

EMGM Meeting on MenWY, Frankfurt

Source: Annual reports 2006-2015\_inVS 4

# Age specific incidence rates 2015-2016 (partial) for serogroups W and Y

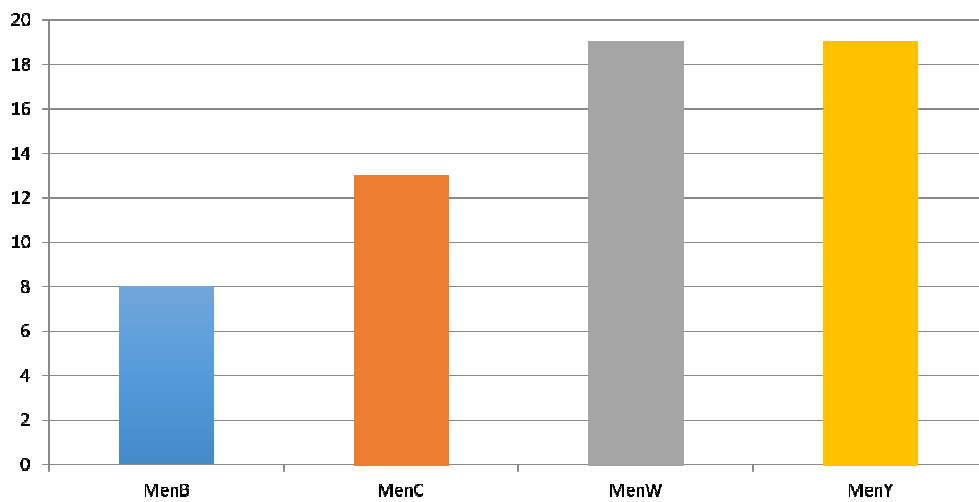


Nov. 1st, 2016

EMGM Meeting on MenWY, Frankfurt

5

# Case fatality rates 2015 (in %) for serogroups B, C, W, Y



Total of :  
- 53 deaths (11%)  
- 5 early sequellae(5%)

CFR highest among >60yr population

Nov. 1st, 2016

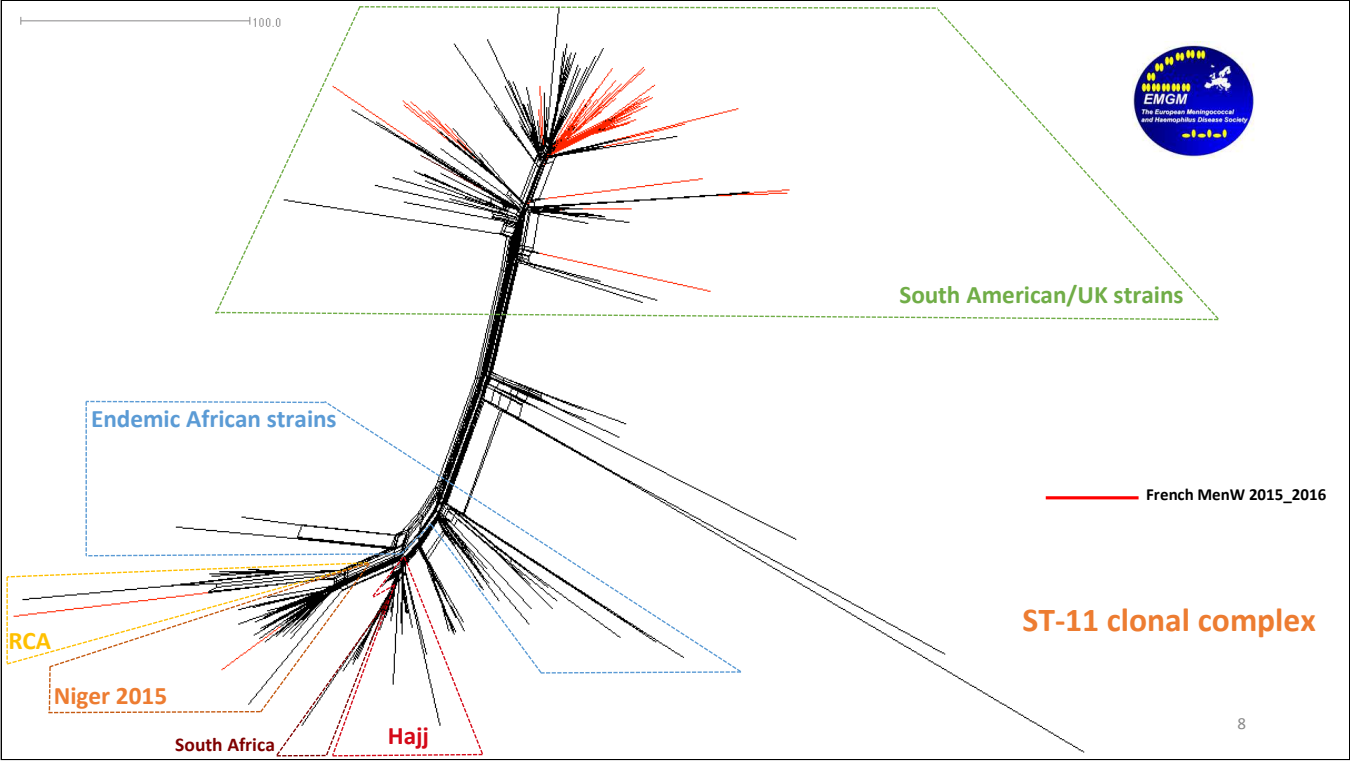
EMGM Meeting on MenWY, Frankfurt

Source: Annual report 2015\_inVS 6

## Sequence typing of MenW in 2015-2016(partial)



Year	2015-2016 (partial)
Dominant variant according to the typing method used	W:P1.5,2:F1-1:ST-11 (cc11)
<b>Dominant variant</b> according to the typing method used, in % of all MenW cases	71,7%
<b>cc11</b> in % of all serogroup W cases	73,3%





# Outbreaks caused by serogroups W and Y 2012 – 2016(partial)



	MenW	MenY
Number of outbreaks or clusters	1	0
Total number of patients involved	8	-
Settings	Travel-related cases (Senegal, Mali, Benin) No previous ACYW vaccination meningitis (n=4), pneumonia and septicaemia (n=2), arthritis (n=1), pericarditis (n=1) W:P1.5,2:F1-1:ST-11 (cc11)	